



Meaningful Innovation.

WEEE Number: 80133970

# INSTRUCTION MANUAL LED FLOOD LIGHT



**SUPER BRIGHT**  
**135+**  
LM/WATT EFFICIENCY

**1 METER WIRE**

## TECHNICAL DATA

MODEL	SKU	WATTS	LUMENS B/WIDE CONE	BEAM ANGLE	LIFE SPAN [HOURS]	DF	CRI	INPUT VOLTAGE	OPERATION TEMPERATURE	DIMENSION	BODY TYPE	N/W [KGS]	MAX MOUNTING HEIGHT	PROJECTED AREA [MMP]
VT-44033	23196 23197 23198	30W	3450	115°	25,000	>0.9	>70	AC: 220-240V 50Hz	-20 to +45°C	164.5x153x34mm	Aluminium	0.41	<5M	25168.5
VT-4455	23199 23216 23217	50W	5740	115°	25,000	>0.9	>70	AC: 220-240V 50Hz	-20 to +45°C	183.5x169x34mm	Aluminium	0.56	<5M	31011.5
VT-44101	23200 23218 23219	100W	11480	115°	25,000	>0.9	>70	AC: 220-240V 50Hz	-20 to +45°C	253.5x242.5x40mm	Aluminium	1.1	<5M	61473.75
VT-44153	23201 23202	150W	17220	115°	25,000	>0.9	>70	AC: 220-240V 50Hz	-20 to +45°C	328.5x295x43mm	Aluminium	1.78	<5M	96907.5
VT-44201	23220 23221	200W	22960	115°	25,000	>0.9	>70	AC: 220-240V 50Hz	-20 to +45°C	402.5x349.5x44mm	Aluminium	2.8	<5M	140673.75
VT-44003	10367 23203	300W	34440	115°	25,000	>0.9	>70	AC: 220-240V 50Hz	-20 to +45°C	496x445x49mm	Aluminium	4.39	<5M	220720

\*This product contains a light source of energy efficiency class<D>,where <D> shall be replaced by the energy class of the contained light source.

## INTRODUCTION & WARRANTY

Thank you for selecting and buying V-TAC product. V-TAC will serve you the best. Please read these instructions carefully before starting the installing and keep this manual handy for future reference. If you have any another query, please contact our dealer or local vendor from whom you have purchased the product. They are trained and ready to serve you at the best. The warranty is valid for 5 years from the date of purchase. The warranty does not apply to damage caused by incorrect installation or abnormal wear and tear. The company gives no warranty against damage to any surface due to incorrect removal and installation of the product. The products are suitable for 10-12 Hours Daily operation. Usage of product for 24 Hours a day would void the warranty. This product is warranted for manufacturing defects only.

**IP65  
RATING**

**05  
YEAR  
WARRANTY\***



**PRO  
SERIES**



**FR**  
Cet appareil,  
ses  
accessoires  
et cordons  
se recyclent

À DÉPOSER  
EN MAGASIN



OU À DÉPOSER  
EN DÉCHÈTERIE



Points de collecte sur [www.quefairede mesdechets.fr](http://www.quefairede mesdechets.fr)  
Privilégiez la réparation ou le don de votre appareil !

## WARNING

- Please make sure to turn off the power before starting the installation.
- Installation must be performed by a qualified electrician.
- The light source of this luminaire is not replaceable, when the light source reaches its end of life the whole luminaire should be replaced.
- If the external flexible cable or cord of this luminaire is damaged, it shall be exclusively replaced by the manufacturer or his service agent or a similar qualified person in order to avoid a hazard.
- Replace any cracked protective shield.
- Terminal block not included.
- Proper grounding should be ensured throughout the installation.
- Minimum distance from lighted objects 1m.

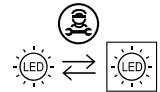
**NOTE:** To reduce the risk of strangulation the flexible wiring connected to this luminaire shall be effectively fixed to the wall if the wiring is within arm's reach.



This marking indicates that this product should not be disposed of with other household wastes.

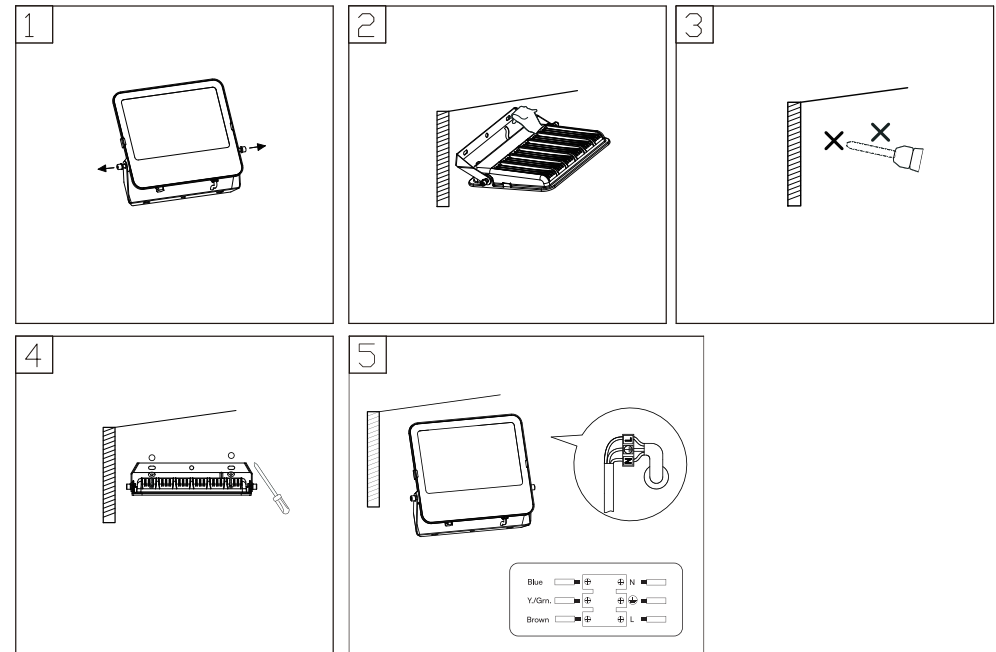


Caution, risk of electric shock.



**Replaceable (LED only)  
light source  
by a professional**

## INSTALLATION DIAGRAM



## INSTALLATION INSTRUCTION

- DO NOT USE IN AREAS WITH LIMITED VENTILATION OR OUTSIDE THE RATED AMBIENT TEMPERATURE RANGE. \*CONNECT WITH WATERPROOF CABLE HOUSE ONLY. \*ENSURE ELECTRICITY IS SWITCH OFF BEFORE INSTALLATION.

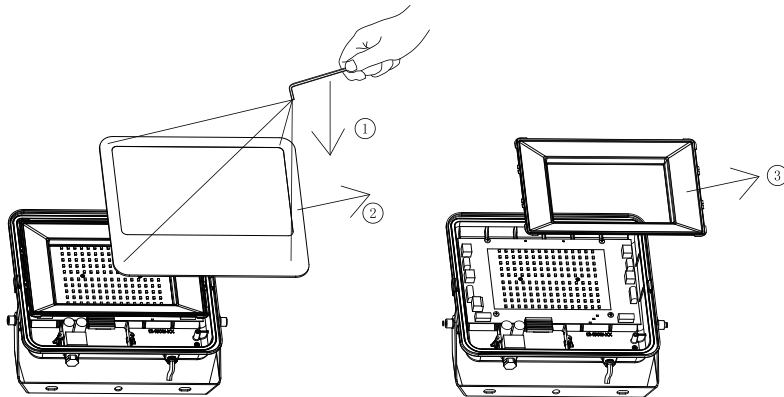
- Please do not mount to a surface that is prone to vibrations.\*

Remove the screw and the bracket afterward. (Figure 1) Before drilling, mark the hole position for fixing the bracket onto the wall (Screw not supplied). (Figure 2)

- Screw the retaining bracket to the wall with a suitable quantity of screws. (Figure 4)
- Mount the bracket back to the fixture. Adjust the floodlight according to the desired position. Tighten the screw. (Figure 5) Connect your main cable (HO5RN-F3G1.0mm2 Recommended) with the input lead of our product through the waterproof junction box. Note, the line (-) of the lead. (Need to use the junction box of IP65 or above, ensure to tighten the waterproof screw) Switch on the power to make sure if the product is working.

## DISMANTLING INSTRUCTIONS

(For Market surveillance team only)



**Note:** Light source removal will void the warranty



IN CASE OF ANY QUERY/ISSUE WITH THE PRODUCT PLEASE REACH OUT TO US AT  
SUPPORT@VTACEXPORTS.COM V-TAC HOUSE, KELPATRICK ROAD, SLOUGH, BERKSHIRE, SL1 6BW, UK.